

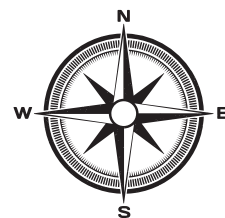


NEXA'S LINGA

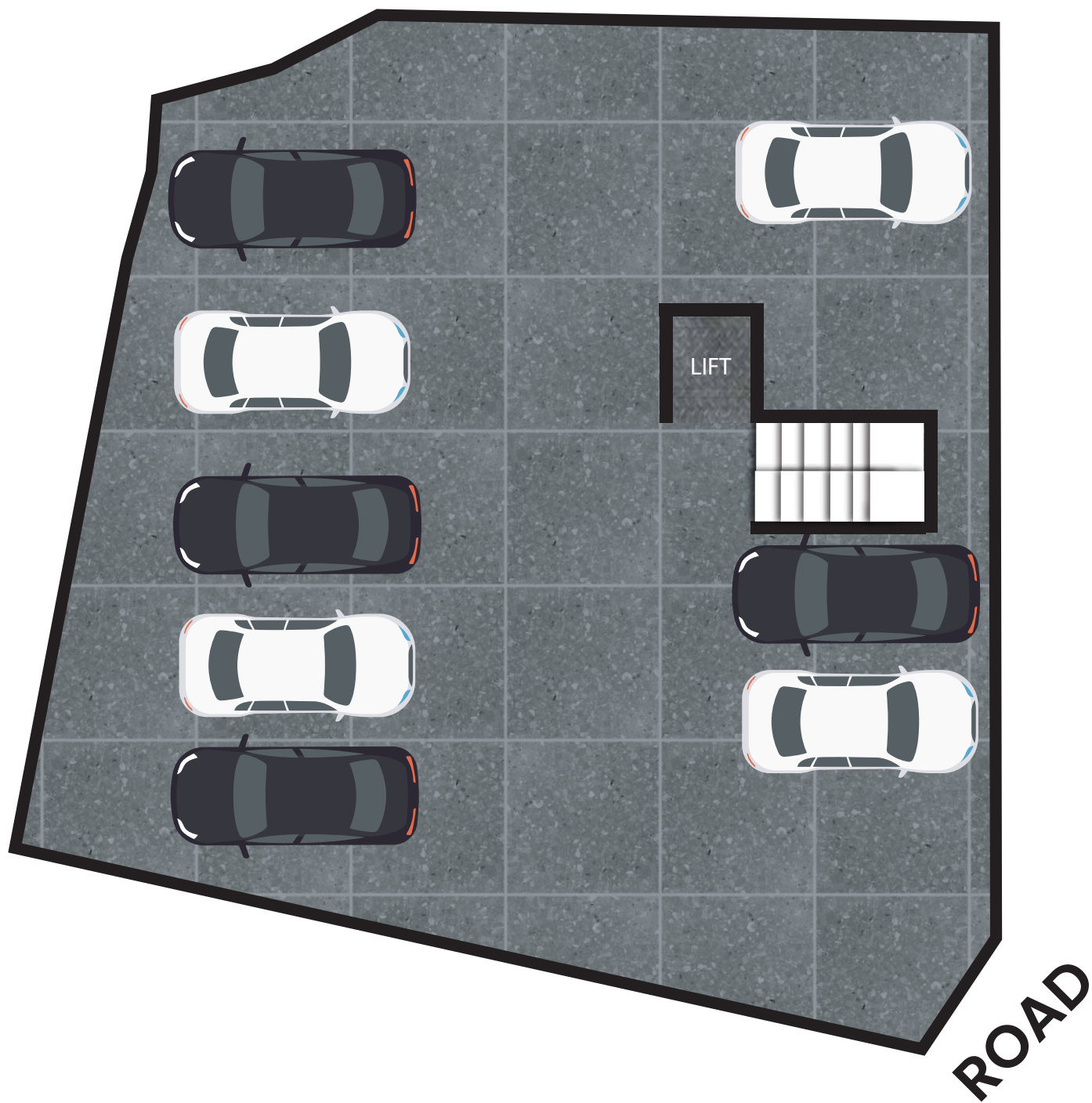
No. C-285, 1st Street, Periyar Nagar, Ch - 82.

📞 96001 46922 | 98401 44022

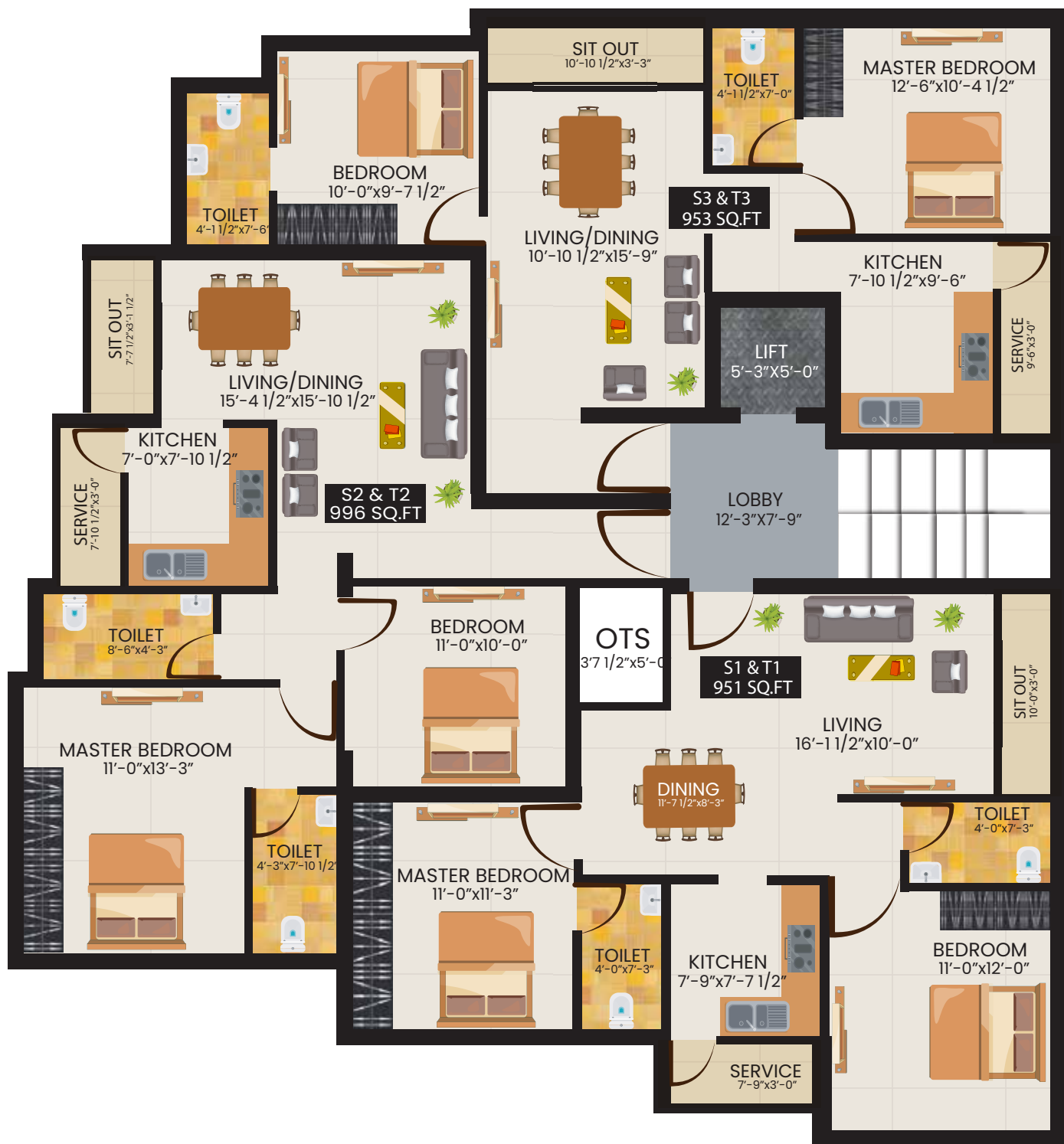
#W-736/1, 1st Floor, East Main Road,
Anna Nagar West Extn., Chennai - 600101.



STILT FLOOR







ONGOING PROJECTS



GS ENCLAVE
No.23, 62nd Street,
Ashok Nagar, Ch - 83.
Flats starting from 1085 - 2390 sq.ft



EESHA
Plot No: 1020 & 1021, 11th Street,
Z Block, Anna Nagar, Ch - 40.
Flats starting from 920 - 935 sq.ft



HIVE
Plot No: 3 - ABC, Jeshwanth Nagar,
Mogappair, Ch - 37.
Flats starting from 1700 - 1960 sq.ft



MAYURI
Block No L-II, T.N.H.B Colony,
Korattur, Ch - 80.
Flats starting from 1430 sq.ft



AKSHAYAM
#812, 35th Street, TNHB Colony,
Korattur, Ch - 80.
Flats starting from 1360 sq.ft.



PRIDE
No.16 Venkatachalam Nagar,
Thirumullaivoyal, Ch - 62.
Flats starting from 988 - 1317 sq.ft

PROJECT SPECIFICATION:

FOUNDATION & STRUCTURE

- ❖ RCC column, beam, and slab frame structure, Stilt + 3 floors.
- ❖ 9" thick outer walls & 4.5" thick internal walls with Wire-cut Red Brick masonry filler and cement plastering.

FLOOR FINISHES

- ❖ Living, dining, and kitchen with SOMANY/KAJARIA vitrified flooring (4x2).
- ❖ Balconies, utilitarian vitrified tiles with a matte finish, and non-skid tiles.
- ❖ Bathroom - The ceiling will be coated with two coat of emulsion and premium glazed ceramic tiles up to a ceiling height of 300 x 450 mm and Anti-Skid tiles for the floor.

WALL COMPONENTS & PAINTING

- ❖ Outdoor Ace emulsion paints from Asian Paints.
- ❖ Internal Walls - Two coatings of putty were applied to the walls One coat of primer and Two coats of emulsion.

BATHROOM

- ❖ White glazed vitreous from Parryware makes EWC/I-WC
- ❖ washbasin C.P fitting and other suitable fixtures from metro / Parryware / Carry on fittings.
- ❖ Health Faucet shall be provided in all toilets.

DOORS & WINDOWS

- ❖ Main Entrance Door - Teak wood frame with an OST 40mm thick flush door that is 7'6" in height and has a Godrej lock or an equivalent company, tower bolt, a door viewer, and a door stopper.
- ❖ Bedroom Door - Solid wood frame with a flush door of 35 mm thickness, 7'0" in height, and locks made by Godrej or an equivalent company, as well as a thumb turn and a key.
- ❖ Bathroom doors - Solid wood frame, moulded skin, and a thumb turn lock made by Godrej or a comparable company.
- ❖ Windows - French UPVC openable windows and MS

POWER & ELECTRICAL

- ❖ A three-phase electrical supply connection with a switchover facility, copper wiring with the ISI brand on it, and high-quality modular switches for power and lighting.
- ❖ As specified, provide the necessary lighting, fans, and plug points will be provided for all living spaces as per the client's requirements.