

# SARVAM

*The Art of Refined Living.*

SCAN FOR  
SITE LOCATION



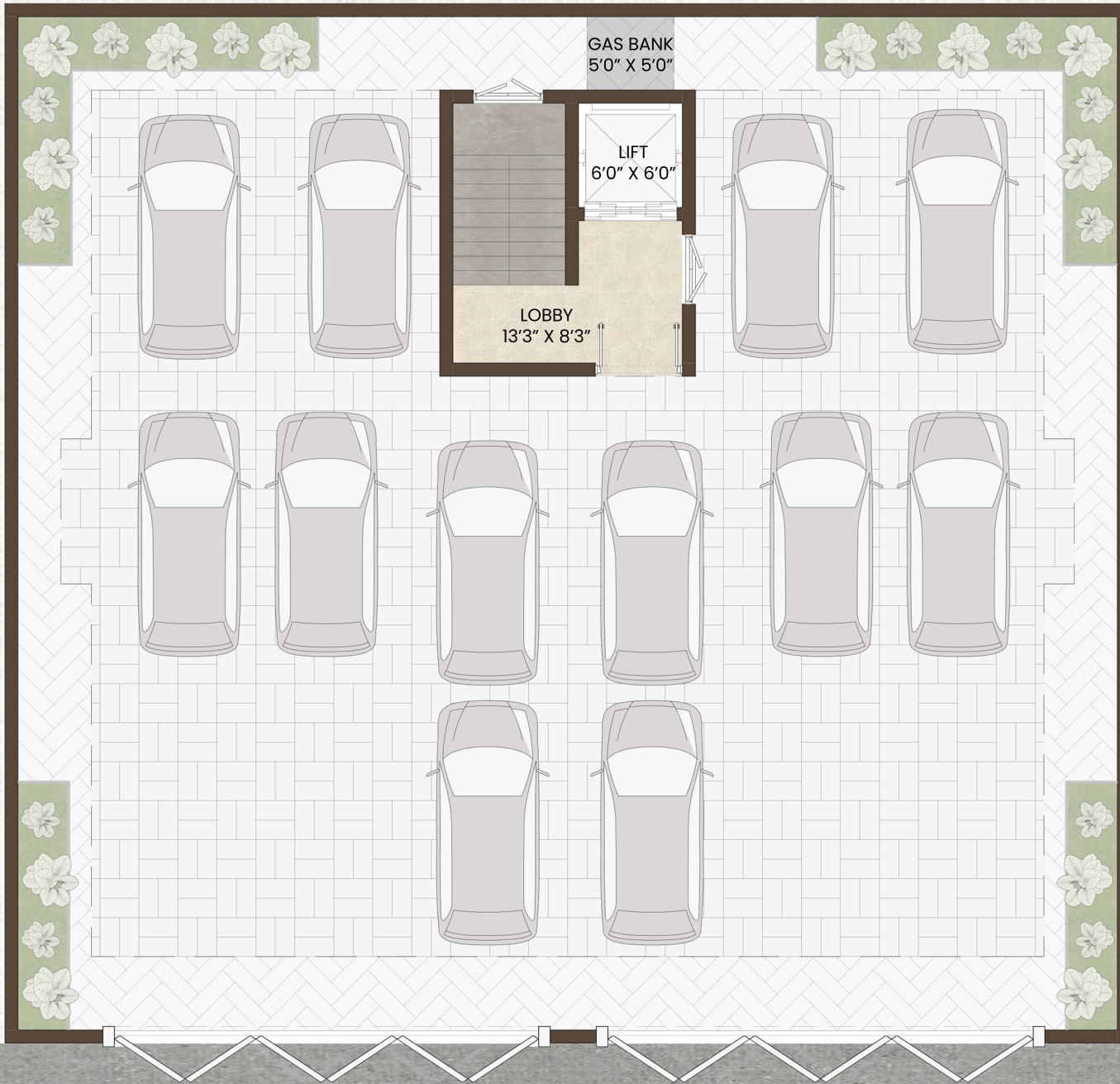
## SITE ADDRESS

#AG 109,110,111,112

RIVER VIEW COLONY, AG BLOCK

ANNA NAGAR, CHENNAI- 600 040.

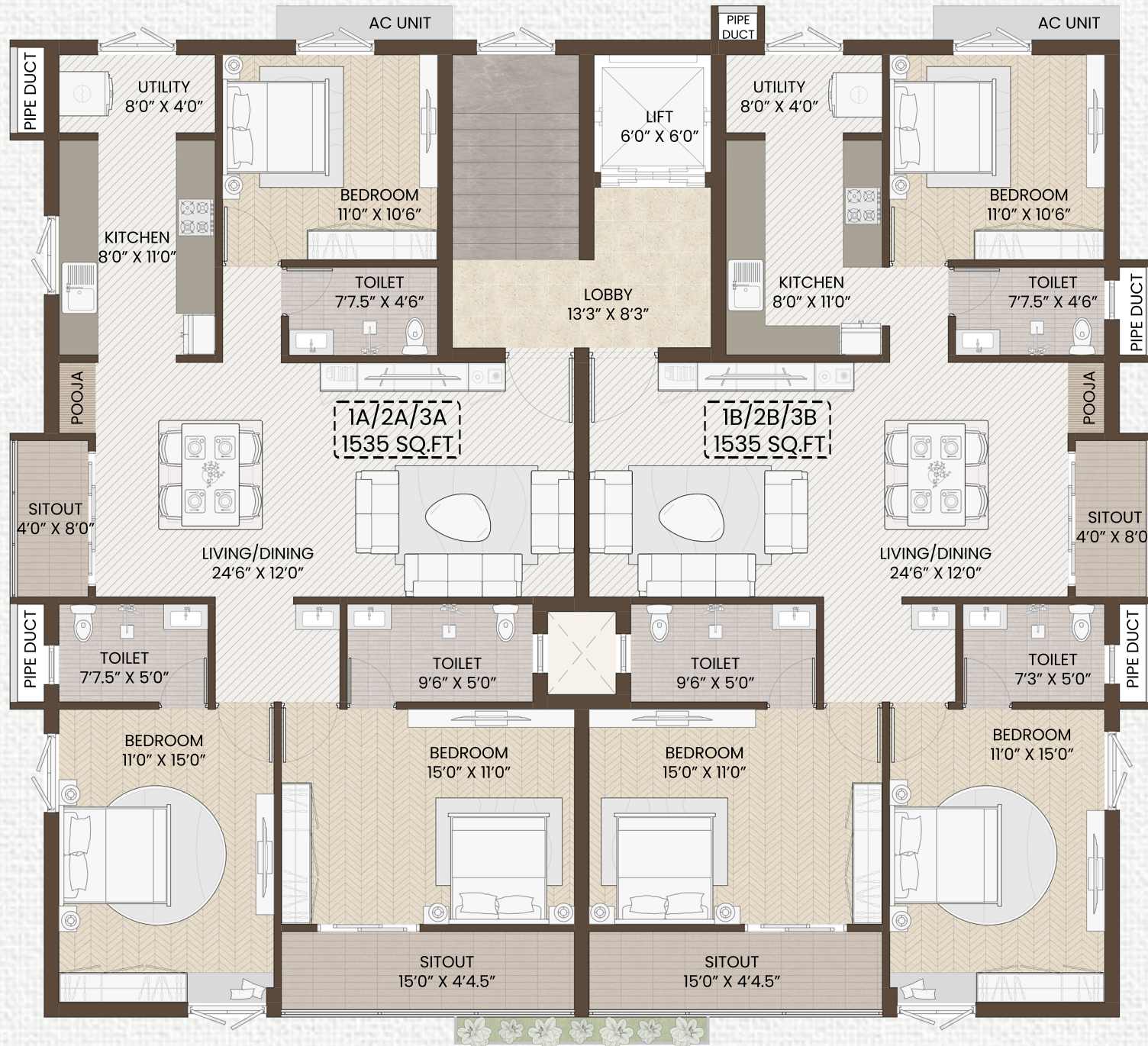




# STILT FLOOR PLAN

ROAD

NO. OF FLOORS: S+3  
NO. OF CAR PARKINGS: 12



**TYPICAL FLOOR PLAN-S+3**

**ROAD**

**TOTAL NO. OF UNITS: 6  
NO. OF UNITS/FLOOR: 2**

## PROJECT SPECIFICATION

### FOUNDATION & STRUCTURE

- RCC Column, Beam & Slab Frame Structure, Stilt +3 Floors.
- 9" thick outer walls & 4.5" thick internal walls with wirecut red brick masonry filler and cement plastering.

### WALL COMPONENTS & PAINTING

- Outer wall Apex emulsion paints from Asian Paints with outer wall texture finish.
- Internal Walls - Two coatings of putty will be applied to the walls One coat of primer and Two coats of premium emulsion.

### FLOOR FINISHES

- Living, Dining, and Kitchen with SOMANY/KAJARIA Vitrified Flooring (4x2).
- Balconies, Utilitarian Vitrified Tiles with a Matte Finish, and Non-skid Tiles.
- Bathroom - The ceiling will be coated with two coat of Emulsion and Premium Glazed Ceramic tiles up to a Ceiling height of 300 x 450 mm and Anti-Skid Tiles for the floor.

### BATHROOM

- White glazed vitreous from Jaguar makes EWC/IWC washbasin C.P fitting and other suitable fixtures from Jaguar.
- Health Faucet shall be provided in all toilets.
- Provision for exhaust fan & geyser.

### DOORS & WINDOWS

- Main Entrance Door - Teak wood frame with an OST 50mm thick flush door that is 8'0" in height and has a Digital Lock, tower bolt, a door viewer, and a door stopper.
- Bedroom Door - Solid wood frame with a flush door of 35 mm thickness, 7'0" in height, and locks made by Godrej or an equivalent company, as well as a thumb turn and a key.
- Bathroom doors - Solid WPC frame, moulded WPC shutter, and a thumb turn lock made by Godrej or a comparable company.
- Windows - French UPVC Sliding windows with MS grills & Mosquito mesh.

## AMENITIES



RO Facility



Digital Lock System



CCP with EV Charging Point



Terrace Cabana



CCTV Surveillance



Fully Automatic Lift



Video Door Intercom



DG Power Backup

## Our Journey

We are a group of young professionals who find immense joy in creating homes that offer exceptional value to our clients. Ensuring a perfect harmony between value and quality is our top most concern. We are fueled by a vision of crafting vibrant communities for our clients, with a focus on sustainable living, thoughtfully designed spaces, and top-notch amenities. Our job is to ensure that we adhere to the highest quality standards and execute our projects with impeccable precision and care.

**NEXA**  
INFRA PROJECTS

"A LEGACY OF HAPPY HOMES"

## REACH OUT TO US



1st FLOOR , NO.W736/1, E MAIN ROAD,  
OPPOSITE LEO ACADEMY OF EXCELLENCE,  
ANNA NAGAR WEST EXTENSION, CHENNAI,  
TAMIL NADU- 600101.



nexainfraprojects@gmail.com



+91 98401 44022  
+91 87544 15020

SCAN FOR  
OFFICE LOCATION

